

Koehl, Robert

1986. "The Chieftain Cup and a Minoan Rite of Passage." *Journal of Hellenic Studies* 106:99-110.

Lebessi, Angeliki

1975-76. "A Sanctuary of Hermes and Aphrodite in Crete." *Expedition* 18(3):2-13.

Lebessi, Angeliki, and Polymnia Muhly

1987. "The Sanctuary of Hermes and Aphrodite at Syme, Crete." *National Geographic Research* 3:102-113.

1990. "Aspects of Minoan Cult: Sacred Enclosures. The Evidence from the Syme Sanctuary (Crete)." *Archäologischer Anzeiger*:315-336.

Marinatos, Nanno

1984. *Art and Religion in Thera*. Athens: D. and I. Mathioulakis.

Moody, Jennifer

1987. "The Minoan Palace as a Prestige Artifact." In *The Function of the Minoan Palaces*, ed. R. Hägg and N. Marinatos, pp. 235-241. Proceedings of the Fourth International Symposium at the Swedish Institute in Athens, 10-16 June 1984. Stockholm.

Morgan, Lyvia

1988. *The Miniature Wall Paintings of Thera*. Cambridge: Cambridge University Press.

Niemeier, Wolf-Dietrich

1987. "Das Stuckrelief des 'Prinzen mit der Federkrone' aus Knossos und minoische Götterdarstellungen." *Athenische Mitteilungen* 102:65-98.

Nilsson, Martin

1950. *The Minoan-Mycenaean Religion and Its Survival in Greek Religion*. 2d rev. ed. Lund: C.W.K. Gleerup.

Renfrew, Colin

1985. *The Archaeology of Cult. The Sanctuary at Phylakopi*. London: The British School of Archaeology at Athens.

Rutkowski, Bogdan

1986. *The Cult Places of the Aegean*. New Haven: Yale University Press.

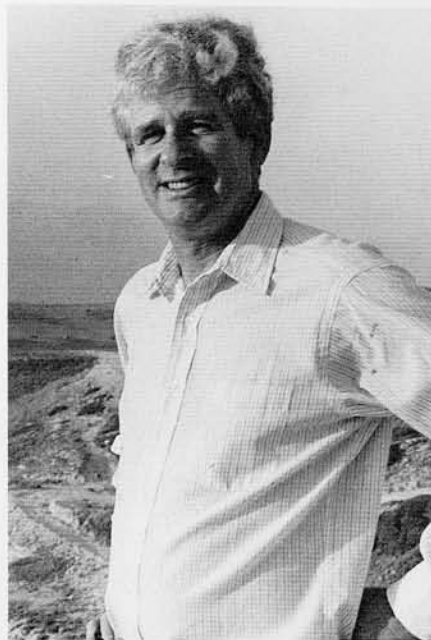
Ventris, Michael, and John Chadwick

1956. *Documents in Mycenaean Greek*. Cambridge: Cambridge University Press.

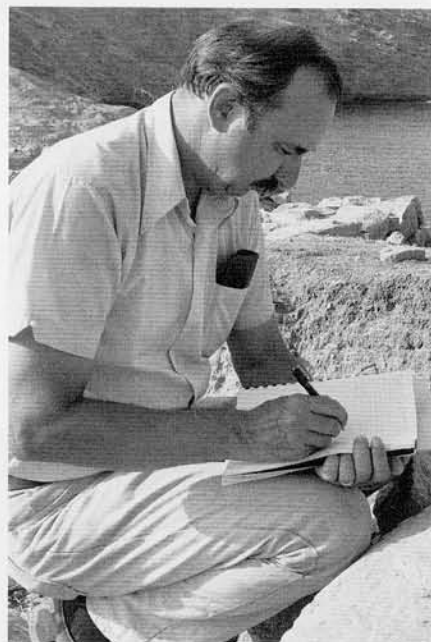
Wilkie, Nancy C., and William D.E. Coulson, eds.

1985. *Contribution to Aegean Archaeology. Studies in Honor of William A. McDonald*. Minneapolis: Center for Ancient Studies, University of Minnesota.

Joseph W. Shaw, who teaches at the University of Toronto in the Department of Fine Art, has done field work in Crete since 1964 (at Kato Zakros) and is presently co-editor with Maria C. Shaw of the multi-volume series on the Kommos Excavations, being published by Princeton University Press.



Philip Betancourt has been a specialist in Minoan archaeology for many years. He received his Ph.D. from the University of Pennsylvania and is now Laura H. Carnel Professor of Art History at Temple University. He and Costis Davaras, Superintendent for antiquities for eastern Crete, jointly direct the excavations at Pseira. Betancourt is the author of eight books and numerous articles on Aegean art and archaeology.



Leslie Preston Day is Associate Professor of Classics at Wabash College. She received her Ph.D. in Classics from the University of Cincinnati. She has done extensive field work on the Bronze Age site of Ayia Irini on the island of Keos, which formed the basis of her dissertation, and in the Byzantine Civic complex at Pella of the Decapolis in Jordan, for which she co-authored the final publication (R.H. Smith and L.P. Day, *Pella of the Decapolis II*). She is currently the Field Director of the Vronda site at Kavousi and Co-director of the Kavousi excavations.



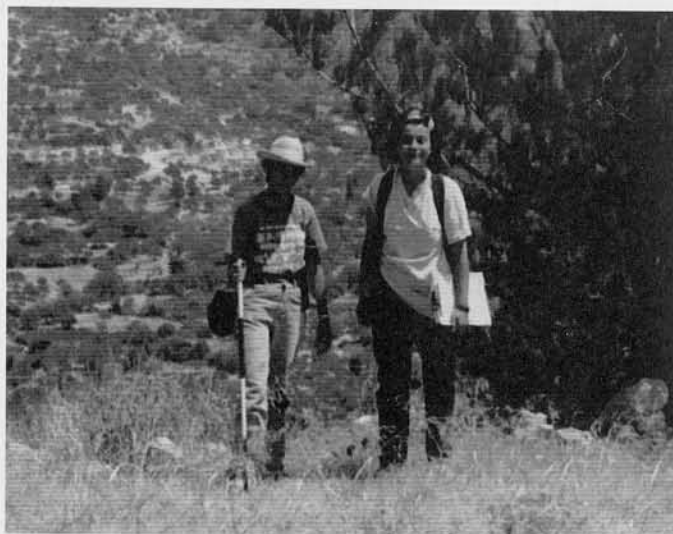


Geraldine C. Gesell is Lindsay Young Professor of Classics at The University of Tennessee, Knoxville. She received her Ph.D. from the University of North Carolina at Chapel Hill and has worked in Crete since 1969. Her research specialty is Minoan cult and its survivals in Early Iron Age Crete, a topic on which she has written a book, *Town, Palace, and House Cult in Minoan Crete*, and several articles. She is currently the Executive Director of the Kavousi excavations.

William D.E. Coulson is Director of the American School of Classical Studies at Athens and Professor of Classical Studies at the University of Minnesota. He received his Ph.D. in Classics from Princeton University. Before working on the Kavousi Project, he worked on the Messenia Project and co-directed an excavation at Naukratis in the Western Nile Delta. His research specialty is the Greek Dark Ages. He has written *The Dark Age Pottery of Messenia*, and co-authored *Excavations at Nicoria in Southwest Greece III*, *The Dark Age and Byzantine Occupation*. He is currently the Field Director of the Kastro site at Kavousi and Co-director of the Kavousi excavations.



Harriet Blitzer, an archaeologist and ethnographer, has worked annually for 20 years on archaeological excavations and surveys in Greece, Turkey, and Yugoslavia. For the last 9 years she has been researching and writing a book on the economy and material culture of the traditional Aegean entitled: *The Traditional Industries of Greece: Their History, Technology, Raw Materials and Trade*.



Barbara J. Hayden (left) is a Research Associate in the Mediterranean Section of The University Museum. She received a Ph.D. in Classical Archaeology from the University of Pennsylvania in 1981. **Jennifer A. Moody** is a Research Associate at the Archaeometry Laboratory, University of Minnesota, Duluth. Hayden and Moody are co-directors of the Vrokastro Survey Project.



Polymnia Muhly received a Ph.D. in Classical and Near Eastern Archaeology from Bryn Mawr College in 1981 and has excavated at Syme since 1973. She teaches Modern Greek at the University of Pennsylvania.