

About the Authors

Bibliography

Blanchard, Chuck

1989. "The Calusa and Their Watercraft." *Calusa News* No. 3 (May).

Calusa News

1987-1991. *Calusa News*. Newsletter of the Southwest Florida Project, Institute of Archaeology and Paleoenvironmental Studies, University of Florida, Gainesville.

Cushing, F.H.

[1896] 1973. *Explorations of Ancient Key Dwellers' Remains on the Gulf Coast of Florida*. Reprinted in *Antiquities of the New World*, Vol. 13. New York: AMS Press.

Hudson, C.

1976. *The Southeastern Indians*. Knoxville: University of Tennessee Press.

Gilliland, M.S.

1975. *The Material Culture of Key Marco, Florida*. Gainesville: University of Florida Press.

Goggin, J.M., and W.C.

Sturtevant
1964. "The Calusa: A Stratified, Nonagricultural Society." In *Explorations in Cultural Anthropology*, ed. Ward H. Goodenough, pp.179-219. New York: McGraw-Hill.

Hann, J.H., ed.

1991. *Missions to the Calusa*. Gainesville: University of Florida Press. In press.

Mason, J.A.

1951. "Primitive Wooden Masks from Key Marco, Florida." *Archaeology* 4:4-5.

Marquardt, W.H.

1986. "The Development of Cultural Complexity in Southwest Florida: Elements of a Critique." *Southeastern Archaeology* 5(1):63-70.

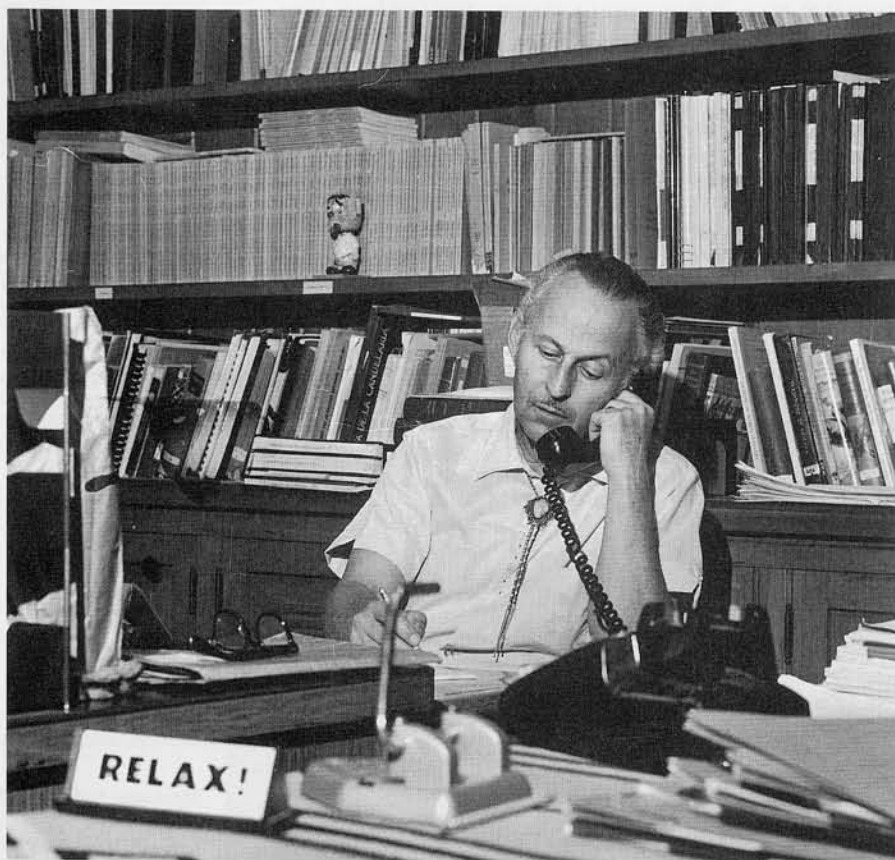
Sturtevant, W.C.

1962. "Spanish-Indian Relations in Southeastern North America." *Ethnohistory* 9(1):41-94.

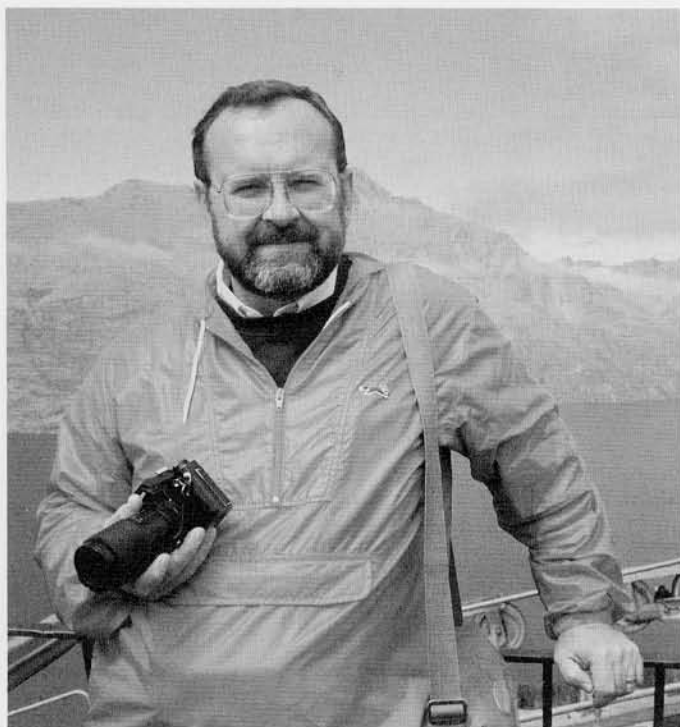
Wardle, H.N.

1951. "The Pile Dwellers of Key Marco." *Archaeology* 4:181-186.

Victoria Lindsay Levine received a Ph.D. in Musicology from the University of Illinois at Urbana-Champaign in 1990. She is an ethnomusicologist specializing in American Indian musical cultures. Her research has focused on Southeastern tribes, particularly the Choctaw as well as Louisiana Indians. She co-authored *Choctaw Music and Dance* (University of Oklahoma Press, 1990) with anthropologist James Howard. In 1988 Levine joined the faculty of The Colorado College; she currently serves as the John D. and Catherine T. MacArthur Professor of Ethnomusicology.



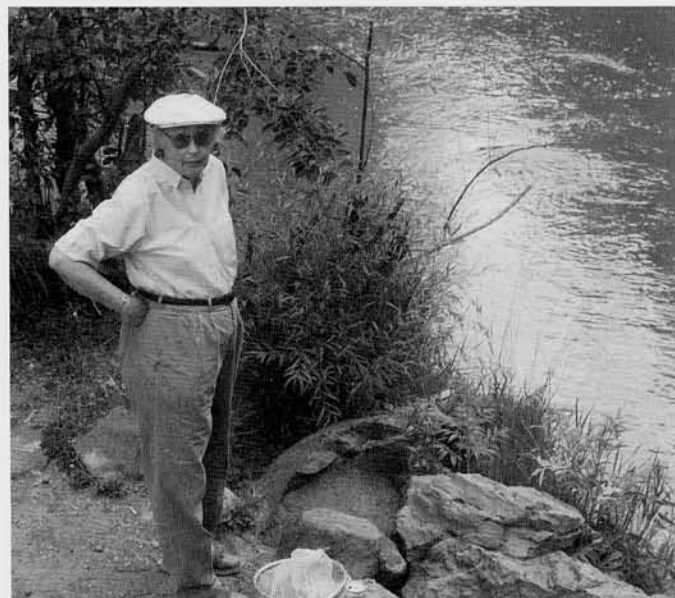
Albert H. Schroeder specialized in Southwestern U.S. archaeology, ethnoarchaeology, and ethnohistory. His surveys and excavations were conducted in Hohokam, Anasazi, Mogollon, and Hakataya sites in the states of Arizona, Utah, Colorado, and New Mexico. His historical work and documentary research involved tribes in these same states, and also included Spanish period studies. These have been published in various monographs and numerous articles. Schroeder, now retired, received an M.A. degree from the University of Arizona in 1941 and a Doctor of Laws (hon. caus.) in 1980 from New Mexico State University.



Donald N. Brown is Professor of Anthropology at Oklahoma State University. His research activities have focused on Native American communities and other ethnic groups in the Southwest. He has published on such various topics as Pueblo Indian dance and dance costumes, prehistoric musical instruments from the Southwest, social structure as reflected in architecture, and alcohol use at a Rio Grande Pueblo. In the 1960s he compiled and edited seven phonograph recordings of traditional Pueblo Indian and Spanish-American music in New Mexico. In 1987 Brown produced *Nations within a Nation*, a documentary for television that focused on the issue of sovereignty and Native American communities.



Henry Usher Hall (1876-1944) was Curator of the Section of General Ethnology at The University Museum from 1924 to 1935. His association with the Museum began in 1914 when he represented the institution on an expedition to northern Siberia. During that trip he collected artifacts, took photographs, and made notes on the indigenous people. He also conducted excavations in the Dordogne and in 1936-37 led an expedition to Sierra Leone in West Africa, where he studied the Sherbro. Hall wrote a number of articles for the *Museum Journal* and *Bulletin*, including his pieces on the North American collections.



Marianne L. Stoller (Ph.D., Univ. of Pennsylvania) is Professor of Anthropology and Chair of the Department at The Colorado College. She specializes in the ethnohistory of the Southwest, especially the Hispanic peoples, and has done research and published on their arts and crafts, land tenure, and settlement patterns. Currently she is co-director of an historical archaeology project excavating a 17th century Spanish domestic site south of Santa Fe. The focus of her research interests is the interethnic relations of Spanish settlers and Native Americans, especially the Pueblos. An avid fly fisherwoman, she is pictured here in her favorite place—next to a trout stream.