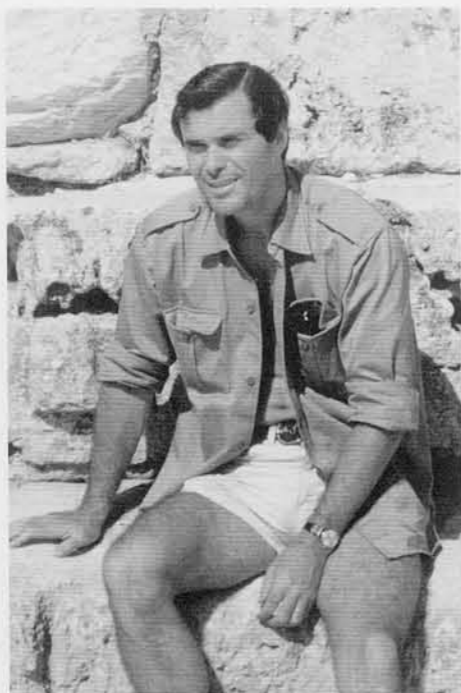


**Donald White** is Curator of the Mediterranean Section of The University Museum and Professor of Classical Studies at the University of Pennsylvania. Prior to 1973 he was a member of the University of Michigan's Department of History of Art. From 1964 until 1967 he excavated the port city of Apollonia in Libya, and in 1969 began the excavation of the Extramural Sanctuary of Demeter and Persephone at Cyrene. He is Series Editor of the Cyrene Final Reports. From 1985 to 1989 White excavated a Late Bronze Age settlement at Marsa Matruh in Egypt and is Series Editor for the final publication of that project. He is also in charge of the renovation of the Museum's Mediterranean Section's galleries. He has written or co-authored three books and numerous articles.



**Jaimee P. Uhlenbrock** is Professor of Classical Art and Archaeology at The College at New Paltz, SUNY. A graduate of the Institute of Fine Arts, New York University, with a specialization in classical archaeology, she has worked in Sicily, Greece, and Turkey, concentrating on the study of Greek terracottas. She is the author of *The Terracotta Protomai from Gela* and principal author of *The Coroplast's Art: Greek Terracottas of the Hellenistic World*. Prof. Uhlenbrock has also written a number of articles focusing on aspects of trade and style in Greek terracottas. She is presently preparing for publication the terracottas from the Sanctuary of Demeter and Persephone at Cyrene.



**Greg Warden** received his Ph.D. in Classical and Near Eastern Archaeology from Bryn Mawr College. He taught at Bowdoin College and the University of Pennsylvania before going to Southern Methodist University where he is Associate Professor and Chair of the Division of Art History. He has excavated in Italy (Poggio Civitate) and Texas. He has published on Etruscan metallurgy and archaeology, as well as Roman art and architecture. He is a Research Associate of The University Museum where he has been preparing publication of the classical bronze figurines. He is also currently working on the sculptural program of the Villa of the Papyri at Herculaneum.



**Gerald P. Schaus** graduated from the University of Pennsylvania in 1978 with a Ph.D. in Classical Archaeology. He has been a Research Associate of The University Museum since 1982. He is presently Associate Professor of Classics at Wilfrid Laurier University in Waterloo, Ontario. He excavated at Cyrene, Libya, as well as at Corinth and Mytilene, Greece, and at Gravina and Ruoti in South Italy. He is the author of Vol. 2 in the Cyrene Final Reports, *East Greek and Laconian Pottery* and co-author of the forthcoming CVA volume on the Corinthian and East Greek vases in The University Museum's collections.



**Susan E. Kane** is currently Associate Professor and Chair of the Art Department at Oberlin College. She received her M.A. and Ph.D. from Bryn Mawr College. A specialist in Greek sculpture, she has long been associated with the University of Pennsylvania's excavation of the Sanctuary of Demeter and Persephone at Cyrene. More recently Kane has turned to subjects concerning the technology of ancient art, from temple construction to the marble trade.



**T. V. Buttrey** spent his teaching career at Yale and the University of Michigan, and has recently retired as Keeper of the Department of Coins and Medals in the Fitzwilliam Museum, Cambridge University. He is President of the Royal Numismatic Society. Prof. Buttrey has published widely in ancient and modern numismatics, and has contributed to the publication of coin finds from a dozen sites, including a Roman villa in Wiltshire, Cosa in Italy, Morgantina in Sicily, and the ancient city of Sardis in Turkey. His study of the coin finds from Cyrene is the most extensive yet to appear from any archaeological site in Libya.

**Janet Monge** received her Ph.D. in Anthropology from the University of Pennsylvania. Fascinated with bones since childhood, she pursued training in physical anthropology, with a special interest in skeletal biology and human evolution. She has been Keeper of Skeletal Collections in the Physical Anthropology section of the Museum since 1983 and Assistant Director of the Museum's Casting Program, which fabricates exact duplicates of ancient fossil bones and teeth, since 1977. Her primary focus of study is in the microstructure (histology) of dental enamel in ancient and recent human populations and considers the storerooms in her sections as containing literally millions of tiny clues to the past.

**Expedition Magazine  
Information for Authors**

**EDITORIAL POLICY AND PRACTICE**

**Purpose.** *Expedition* presents articles on current research in archaeology and anthropology to a non-specialist audience composed of scholars, students, and the lay public. While reflecting the interests of researchers associated with The University Museum, the magazine is committed to communicating the entire range of ideas represented within anthropology and archaeology throughout the world. It therefore offers all scholars involved in such research an opportunity to publish well-illustrated accounts of their work for a broad, general audience.

**Format.** *Expedition* appears three times a year. Individual issues may either focus on a theme or contain articles on a variety of topics. Manuscripts should be submitted in the manner set out in "Information for Authors" (see below). Articles should be about 3000 words in length, and should be accompanied by 12 to 15 illustrations (line drawings and photographs).

**Review Process and Editing.** *Expedition* is a refereed magazine. Manuscripts are reviewed by a minimum of three scholars, including specialists in the topic of a given article. An otherwise excellent article may not be appropriate in content or format for *Expedition's* audience. If the reviewers recommend acceptance of an article, it may be sent back to the author with suggestions for revisions. Final acceptance is the decision of the Editor, who reserves the right to make changes in order to produce clearer, more readable text and illustrations. Once edited, each article is returned to the author for final approval before publication. We do not send page proofs.

**Author's Fee and Offprints.** We pay \$100 for each article published. In addition, authors receive 50 free offprints and 2 free copies of the issue in which their article appears. (In the case of joint authors, the fee and offprints are shared.)

**FURTHER INFORMATION**

Inquiries about submissions and requests for "Information for Authors" should be addressed to:

Editor, *Expedition Magazine*  
The University Museum  
33rd and Spruce Streets  
Philadelphia, PA 19104-6324  
Tel. (215) 898-4119