

Discovery of a leaf-shaped
 flint artificially chipped
 in the gravels of San Isidro.
Abstract

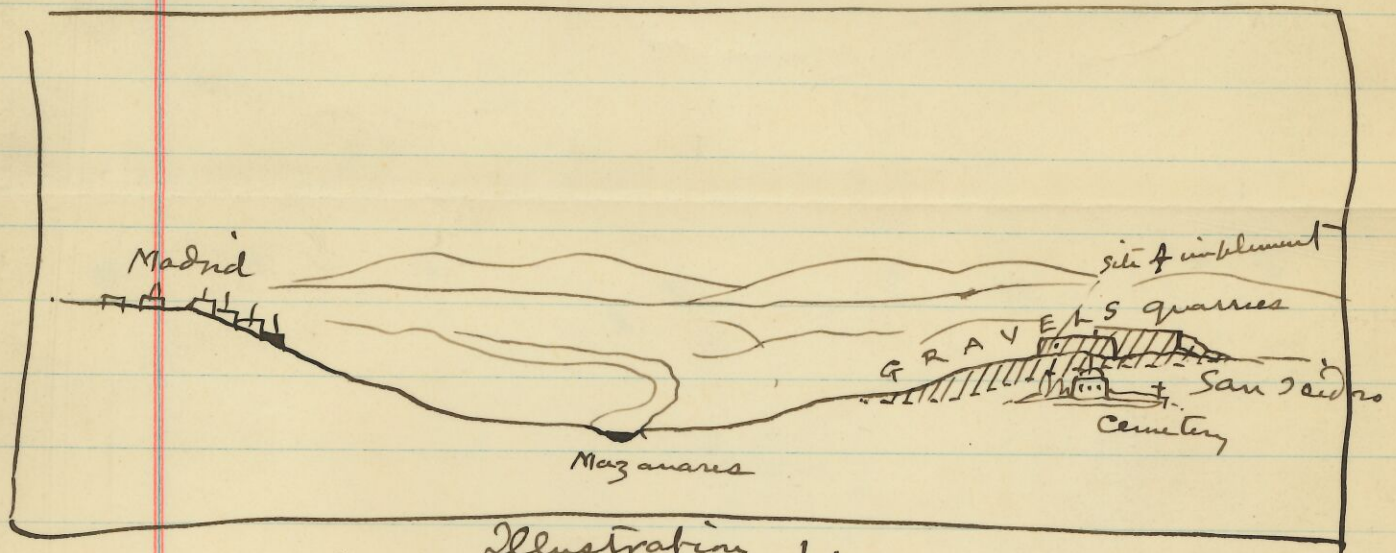


Illustration 1.
 Showing Mazanares gravels at San Isidro
 & site of object found.

Description of ^{height from river - talus etc.} gravels - contorted
 Stratification - Fossils & chipped
 flints found there by Signor de Prado
 about ⁱⁿ 1844 - 1850. (not in place)
 Chipped implements bought from
 workmen by M. Sartet in 1862
 Compared by him with French
 gravel discoveries. Signor Juan
 Vilanova y Pierra examines
 the gravels after this but nothing
 reported by him as found with
 his own hands in place.
 Specimens in the Nat. Hist
 Museum at Madrid all without
 definite history - M de Cartailhac
 visits quarry & buys 2 smaller
 "axes" of workmen.

2) Señor Guroza of Natural Hist. Museum (Madrid) only shows of 3 geological diagrams of gravels -
 The first - Fig. 2 - by de Prado in 1850.

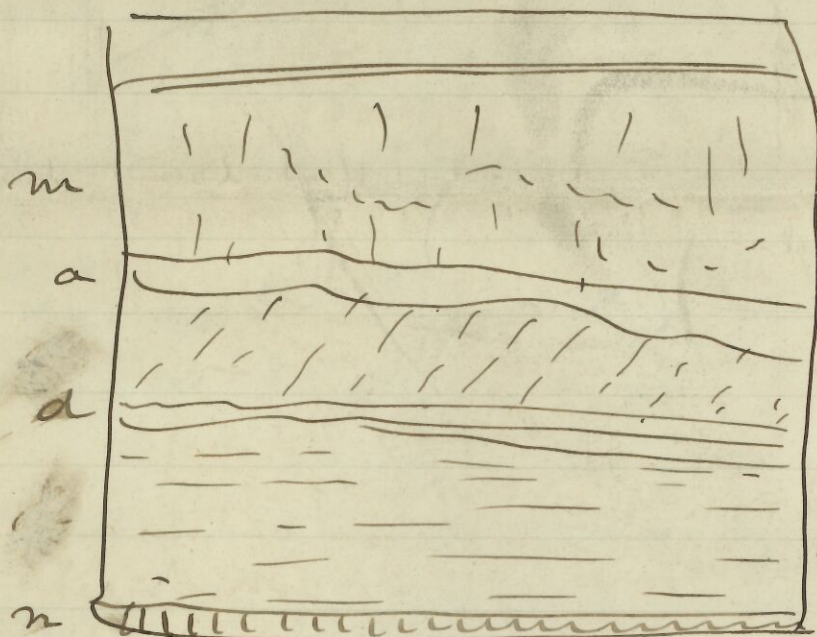


Fig 2
 de Prados' cut. + some in m -

(given here de Po' description of layers m a + d.)
 He states fossils found at base of a d - none in m - no mollusks anywhere + "axes" in d n + some in m -

The second of Villanovas cut - (in Antiquidades de Esp. Vol 1, p. 129) not here given as it is without measurements scale or explanation. He states that ~~Villanovas~~ Prado is wrong - + his m a d + n give no proper idea of stratification. He found nothing in place -

The third is de Mortillet's cut (Materiaux etc p. 201 -) without adequate explanation - + another unexplained cut of de Mortillet in Cantalhue ~~to~~ this cut

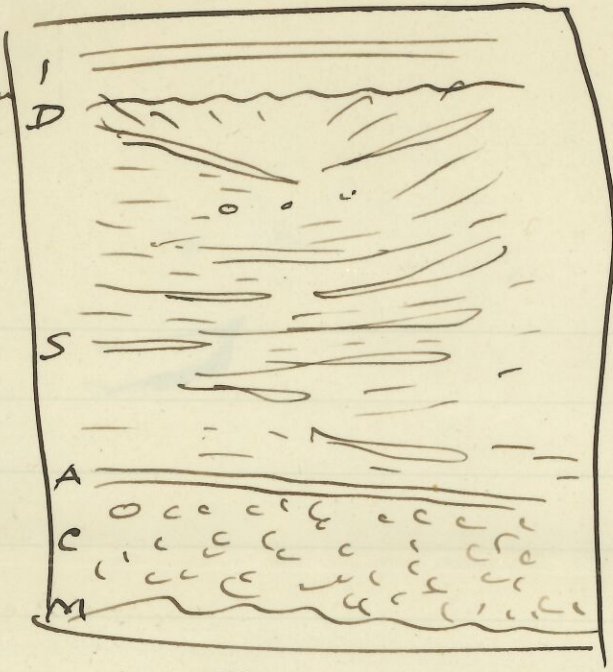
~~From above it appears that~~
 (over)

3)

J. Soan
10. Magdalenian
SD Mousterian

AS Argille et
Lenticles.
AM Chulhan

M Tertiary
marl.

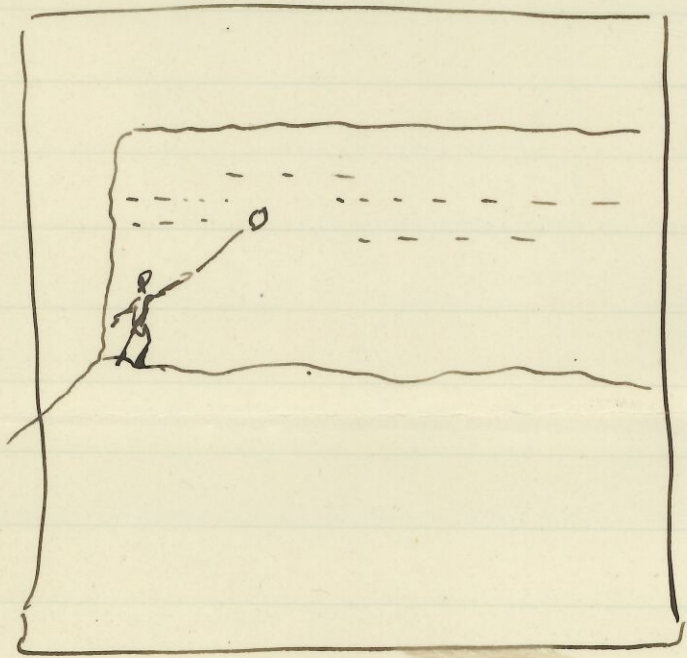


He offers no
proof for the
elaborate classifica-
tion given - Neither
the nor Cartier has
have found fossils
or "implements".
The cut differs from
both others -
The Chulhan
forms are all
but in C.

Fig 3.

De Martlets cut -
Geological facts as to gravels - other age -
Brief comparison of cuts &
Contradictions - result.

- visitor can not learn now
- (a) In what strat. chipped flints were found.
 - (b) In what strat. fossils were found.
 - (c) whether there was really an association of bones with artificial flints.



Visit to quarry
Dec. 30 1892 -
in company with
Mr Culin -
Discovery of
chipped flint
in perpendicular
cut 1 met 90 cent
down.

Fig 4.

Sacred quarry Sacre Dinde
showing flint in place
photograph

(over)

4)

Description of Gravels at distance from river & height I saw them - Red stratum overlying all - very prominent -

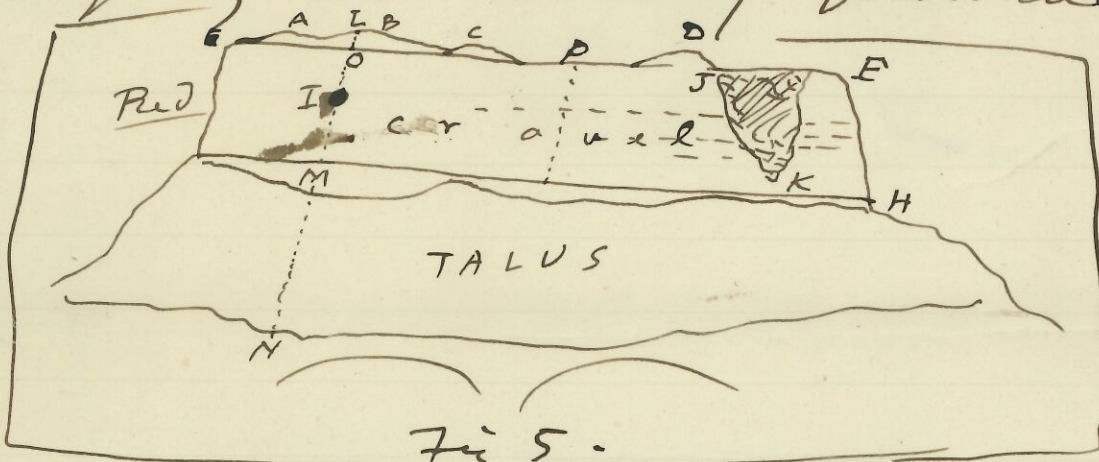


Fig 5.

Measurements of several cuts with assistance of Sig - Quiroga - Flint in upper and band - at Sacred Quarry - ancient rubbish heaps A B C + D.

Intrusive pit J K containing bones + charcoal 1 met - 75 deep - disturbing lines of stratification - Pot found by workman at depth of 2 metres -

(I) on a level with one prominent line of stratification - seen in photo fig 4.

Other exposures compared with this. Testimony of workmen Cuhero family who had witnessed all examinations by students -

Flints always from upper Red stratum. ^{Fossil} Bones never.

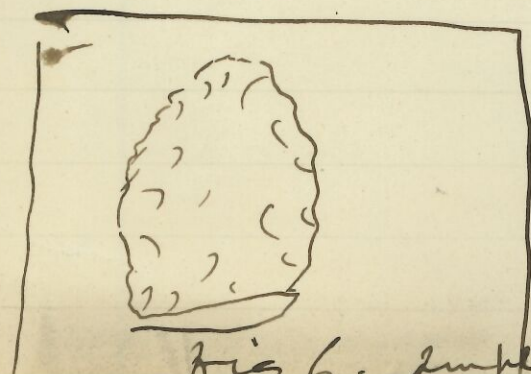
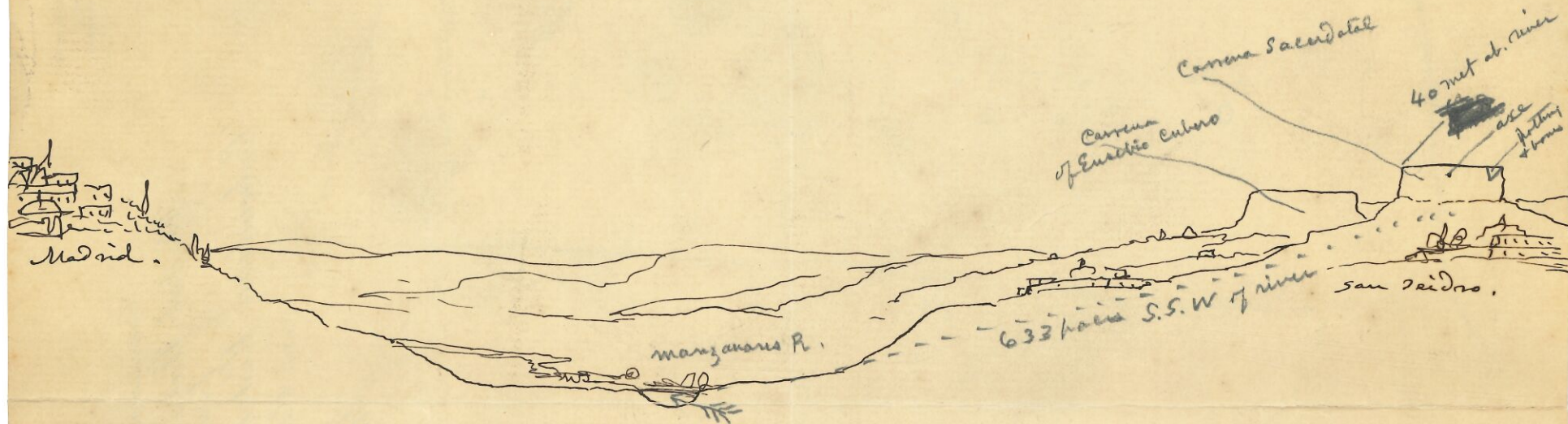


Fig 6. Implemet found.

H. C. Mercer.



Valley of Manzanara at San Isidro
 showing site of flint implement found in place
 Dec. 31 1892 + disturbed point ^{in stratification} full of charcoal
 + pottery + (some bones) 45 metres to right of axe -

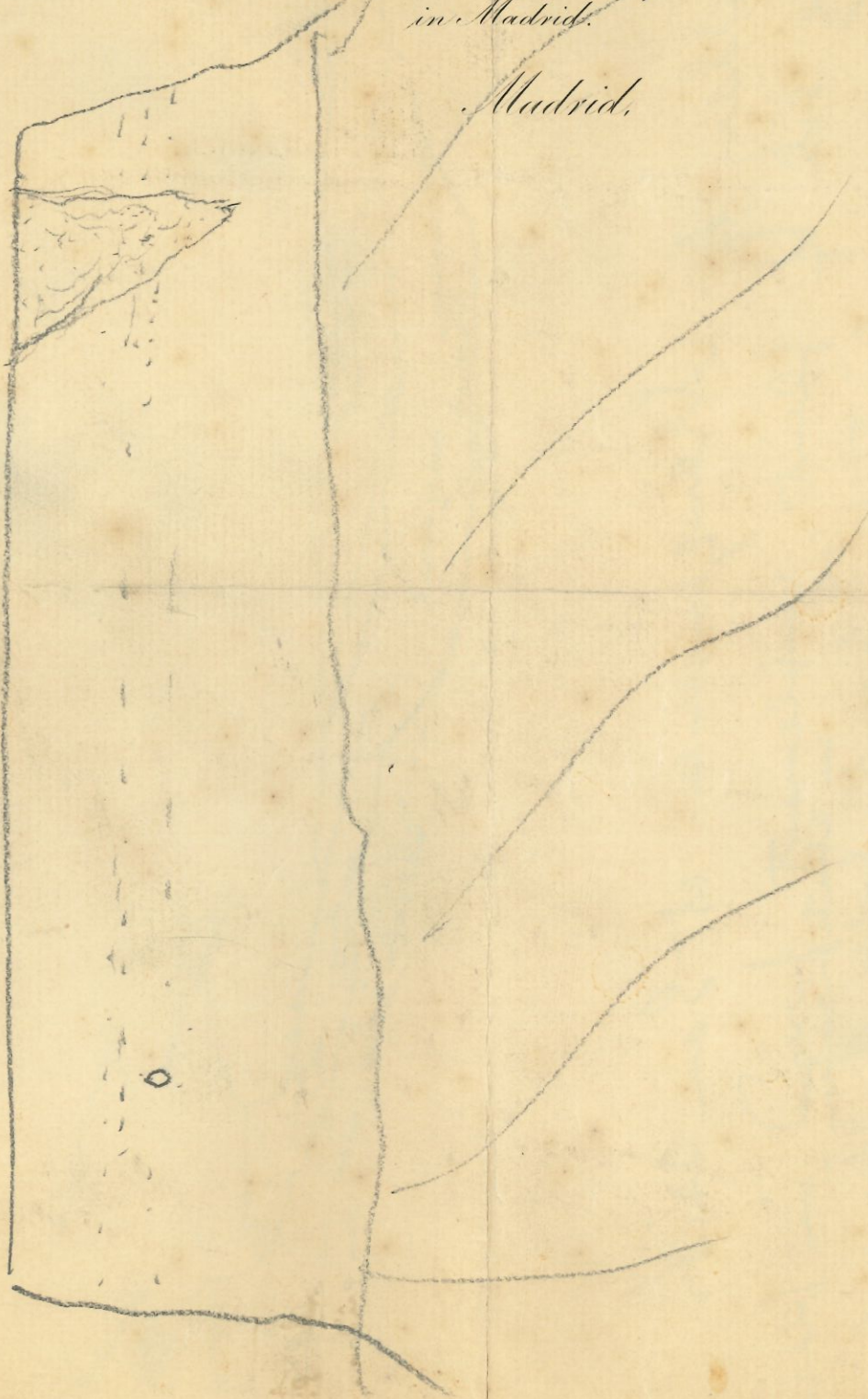
H. C. Mercer

REAR ADMIRAL S. B. LUCE,
U. S. NAVY,
COMMISSIONER GENERAL.

JAMES C. WELLING, L.L.D.
GEORGE BROWN GOODE, L.L.D.
COMMISSIONERS.

*Commission of the
United States of America
for the
Columbian Historical Exposition
in Madrid.*

Madrid.



11.4.37
Mereen

San Lido Palacoth