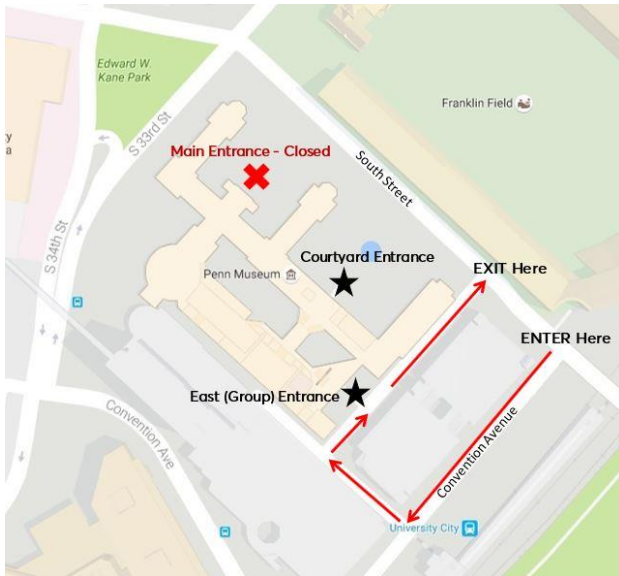


PENNMUSEUM

GETTING TO THE MUSEUM

Please enter through the East (Group) Entrance

SCHOOL BUSES & MOTOR COACHES



Directions via I-76 EAST

- From I-76 E, use the left lane to take Exit 346 A for South Street.
- Turn right onto South Street Bridge.
- After crossing the bridge, turn left onto Convention Avenue. Follow directions below to enter the driveway.

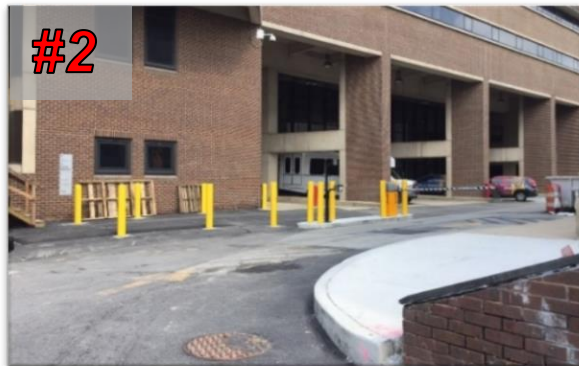
Directions via I-76 WEST

- From I-76 W, use the left lane to take Exit 346 A for South Street
- Turn left onto South Street Bridge
- After crossing the bridge, turn left onto Convention Avenue. Follow directions below to enter the driveway.

Pick up/ Drop off groups at the East (Group) Entrance



- Turn off South Street onto Convention Avenue
- Make a right at the first traffic light to enter the driveway (#1)
- Continue past the parking garage entrance and exit. Make another right into the East (Group) Entrance driveway (#2).
- Wait for the gate arm to be raised. Pull up alongside the walkway to your left. Leave enough room for other vehicles to enter behind your bus.
- Visitors should be dropped off directly in front of the East (Group) Entrance doors (#3)



BUS PARKING

OPTION #1

[Campus Park & Ride](#)

1600 Warfield St
Philadelphia, PA 19145

Only a 5 minute drive from the Penn Museum!

Cost: School buses are \$25/day, Motor coaches are \$50/day

Amenities: Includes showers and restrooms and a shuttle to 34th and Spruce Street.

Reserve your space: Email info@campusparkandride.com or call 215.413.2300 to reserve your space

[Directions from the Penn Museum](#)

OPTION #2

Callowhill Bus Center
114 Callowhill St
Philadelphia, PA 19123

Only a 7 minute drive from the Penn Museum!

Cost: \$20/12 hours, \$30/24 hours

Amenities: The Callowhill Center offers 43 secured spaces and an air-conditioned waiting area with bathrooms and showers, televisions, sleeping lounges and vending machines. Coupons and delivery from local restaurants are also available. Drivers are not able to stay in the facility overnight.

Reserve your space: Parking is available on a first come first serve basis. Call 215.925.3706 for more information

[Directions from the Penn Museum](#)

Additional Resources

[Additional University City Parking Information](#)

[Interactive Parking Lot Map](#)

CAR PARKING

Parking in the East (Group) Entrance lot is reserved for visitors with accessibility needs only and must be requested at the time of the reservation request. Those visitors arriving in cars can use Campus Park & Ride (see above), as well as several parking garages in the area.

Please Note: Garage rates are liable to change during special events on campus. Please call Penn Parking (215-898-8667) for up to date information. The Penn Museum does not manage the pricing or accessibility of parking garages on campus.

On-Street Parking

The Philadelphia Parking Authority's newly released App "*meterUP*," gives everyone with a cellular device a new way to pay for parking in Philadelphia.

How it works

- 1) Go to your app store, download the meterUP app, and create an account
- 2) Look for the meterUP sign or sticker & enter the Zone number listed into the app
- 3) Choose your duration & ensure license plate & payment are correct
- 4) Confirm your parking information & press "Start Parking"
- 5) A timer will count down your time remaining. You may extend time remotely if maximum has not been reached or stop early to avoid unused minutes.

**You also have the choice of paying at the Kiosk when you arrive. **

Parking Garages on Campus (10-15 minute walk to the Museum)

1) South St. & Convention Ave.

Sunday - Saturday: 6:00 a.m. - 11:00 p.m.

Flat Rates (Credit Card only at all times):

\$22: 6:00 a.m. - 5:00 p.m., Monday-Friday

\$12: 5:00 p.m. - 11:00 p.m. Monday-Friday; 6:00 a.m. - 11:00 p.m. Saturday & Sunday

2) Hollenback under South St. (enter via River Fields Drive from northbound University Avenue)

Monday - Friday: 2:30 p.m. -midnight

Saturday: 6 a.m. - midnight

Sunday: 6 a.m. - midnight (except during special events)

Rates (Credit Card only at all times):

\$4 per hour up to 4 hours

\$13 flat rate for 4 hrs. or more

3) East side of the Palestra along 32nd Street (Enter off of Chestnut St.)

Monday – Friday, 2:30 p.m. - midnight

Saturday, 6:00 a.m. - midnight

Sunday, 6:00 a.m. - midnight (except during special events)

Rates:

\$4 per hour up to 4 hours; \$13 flat rate

4) Penn Park, 31st & Lower Walnut Streets

No Permit parking; visitor parking only.

Sunday - Saturday 6:00 a.m. - midnight

Rates (Credit Card only at all times):

\$4 per hour up to 4 hours; \$13 flat rate 4 hours and over first-come, first-served basis

5) Penn Children's Center, 3160 Chestnut Street

Monday - Friday: 7:00 p.m. - midnight

Saturday: 6 a.m. - midnight

Sunday: 6 a.m. – midnight (except during special events)

Rates (Credit Card only at all times):

\$13 flat rate

6) Ludlow 34, Ludlow St. (south side) between 33rd and 34th Street.

Monday - Friday: 5:00 p.m. -midnight

Saturday: 6 a.m. - midnight

Sunday: 6 a.m. – midnight (except during special events)

Rates (Credit Card only at all times):

\$13 flat rate

7) Chestnut 34, N.E. corner 34th & Chestnut Street. (enter off of 34th, north of Chestnut)

Monday – Sunday, 6:00 a.m. - 11:00 p.m.

Flat Rates (Credit Card only at all times):

\$19: 6:00 a.m. - 10:00 a.m.

\$14: 10:00 a.m. - 4:00 p.m.

\$11: 4:00 p.m. - 11:00 p.m.; Saturday & Sunday, 6:00 a.m. - 11:00 p.m.

Additional Resources

[Additional University City Parking Information](#)

[Interactive Parking Lot Map](#)